

**ABU-DHABI OFFICE**

Prime Fleet Transport  
& General Contracting L.L.C  
Abu Dhabi Island, East 0.6 Building  
Mob:  
Fax:  
E-Mail:

**DUBAI OFFICE**

Mob:  
P.O. Box 57116, Dubai, U.A.E





**PF** **PRIME FLEET**  
TRANSPORT AND GENERAL CONTRACTING L.L.C

COMPANY PROFILE

# EXECUTIVE SUMMARY

**PRIME FLEET** was established as a new organization based on the experience and knowledge obtained by previous successful companies. The founders of Prime Fleet have an adequate experience in the field of Construction, Project Management, Transportation of Materials, Onshore and Offshore Oil and Gas Fields and Facilities Services. Prime Fleet is a hands on Management owned business that has a highly professional engineering, transporting and construction company. Client satisfaction is the main ethics of the firm. This is achieved by a combination of prompt and efficient service, quality, adherence to health and safety restrictions and site rules, good motivated workers, site conduct and presentation, good client relationships. As such we have successfully built up long term relationships and repeat business with a host of leading Organizations across the commercial, industrial and local authorities in the Region.

We've experienced incredible growth domestically at this time. Existing strong demand for the provision of Services to the industries where we operate will continue to create new opportunities for us. As we increase the breath and scale of our services capabilities, produce a differentiated integrated offering and secure the benefits of greater internal collaboration, our organizational structure is evolving

primarily to ensure both scalability and sustainability whilst, at the same times continuing to facilities the entrepreneurial drive, commercial innovation and individual commitment that has brought Prime Fleet to where it is today. We have been focusing in particular, on the development of initiative and solutions that will strengthen our workforce growth adding robustness' to internal support system and delivering efficiency gain which underpin further growth

We are a company built on people and people's ideas..... People are at heart at PRIME FLEET, with 250 working hard and efficiently everyday across the country, with many locations and cultural diversity we all ensure that our vision and values are communicated and clearly understood. We are a unique company providing one window services to the industry from concept to completion. Ranging its services from construction, operations & maintenance and project management.

**“ Our prime objective is to provide quality services to our valued customers in a cost effective way; which shall be achieved through timely delivery with a fully dedicated team and continuously enhancing our processes & reducing our non-conformities ”**

# ORGANIZATION INFORMATION

Organization Name: PRIME FLEET TRANSPORT & GENERAL CONTRACTING L.L.C

Legal Structure: Limited Liability Company

Year of Foundation: 2021

Registered Address: Abu Dhabi Island, East 0.6 Building

Telephone

Website

Establishment Card Number: 763956

License No: CN-4012615

ADCCI No: 8800000249

## Commercial Activities

- Transport of materials Assemble light trucks.
- Transport of materials Assembly Heavy trucks.
- Heavy Machines and Equipment Renting.
- Onshore And Offshore Oil And Gas Fields & Facilities Services.

## VISION & MISSION STATEMENT

### VISION STATEMENT:

Prime Fleet's Vision itself is to be one of the prominent companies in the field of transport & general contracting in UAE by 2030.

### MISSION STATEMENT:

Our Mission is to provide our clients with the highest Quality of construction and project management services. We strive to maintain unsurpassed quality equally for both Performance and safety.

**In all of the above,  
"We are, and aim to continue to be, SECOND TO NONE"**



# CORE VALUES

---

## **Ethics:**

Uncompromising integrity, honesty, and fairness are at the heart of our company.

## **Honesty:**

We are always truthful, open and candid.

## **Mutual Respect:**

We work by our Prime Fleet Covenants, which encourage openness, teamwork, and trust. We value an Inclusive culture based on diverse backgrounds, experience, and views.



## **Excellence:**

We set high standards. We apply advanced technology, and we continually innovate and improve.  
We thrive on challenge and accomplishment.

## **Integrity in our Work:**

We are professional and honest in our working relationships. We strive for equity and fairness in our decision making and in our treatment of one another. We honor our commitments. We hold ourselves accountable to the highest ethical and performance standards. Mutual Respect  
We work by our Prime Fleet Covenants, which encourage openness, teamwork, and trust. We value an Inclusive culture based on diverse backgrounds, experience, and views.

## **Culture:**

We seek new opportunities to learn, to improve, to reach and to add value.

# MAIN LINES OF BUSINESS AREAS & ACTIVITIES

## PRIME FLEET'S SERVICES:

- Manufacturing
- Excavation Works
- Sand Filling
- Leveling and compaction of site
- Maintenance of material stock piles on site
- Loading and off-loading of marine vessels on site
- Temporary Road Works on site
- Maintenance of temporary roads on site
- Site management
- Sweet water supply
- Septic tank drainage service
- Fuel supply to equipment's on site
- Electrical and Instrumentation
- Project Management
- Operations and Maintenance
- Others (Mess/Camp Facilities)

## SERVING INDUSTRIES:

Prime Fleet's motive for serving in the Engineering sector mainly focuses on the Following industries:

- Oil and Gas
- Wellhead Developments
- LNG Terminals
- Oil Terminals
- Fertilizers and Refineries
- Power Plants
- Housing and Infrastructure
- Cement
- Food and Beverages
- Chemical and Petrochemical
- Pulp and Paper
- Water, Waste Water and Sewerage
- Water Treatment
- Roads and Highways
- Buildings, Dams and Bridges



## CORPORATE CULTURE

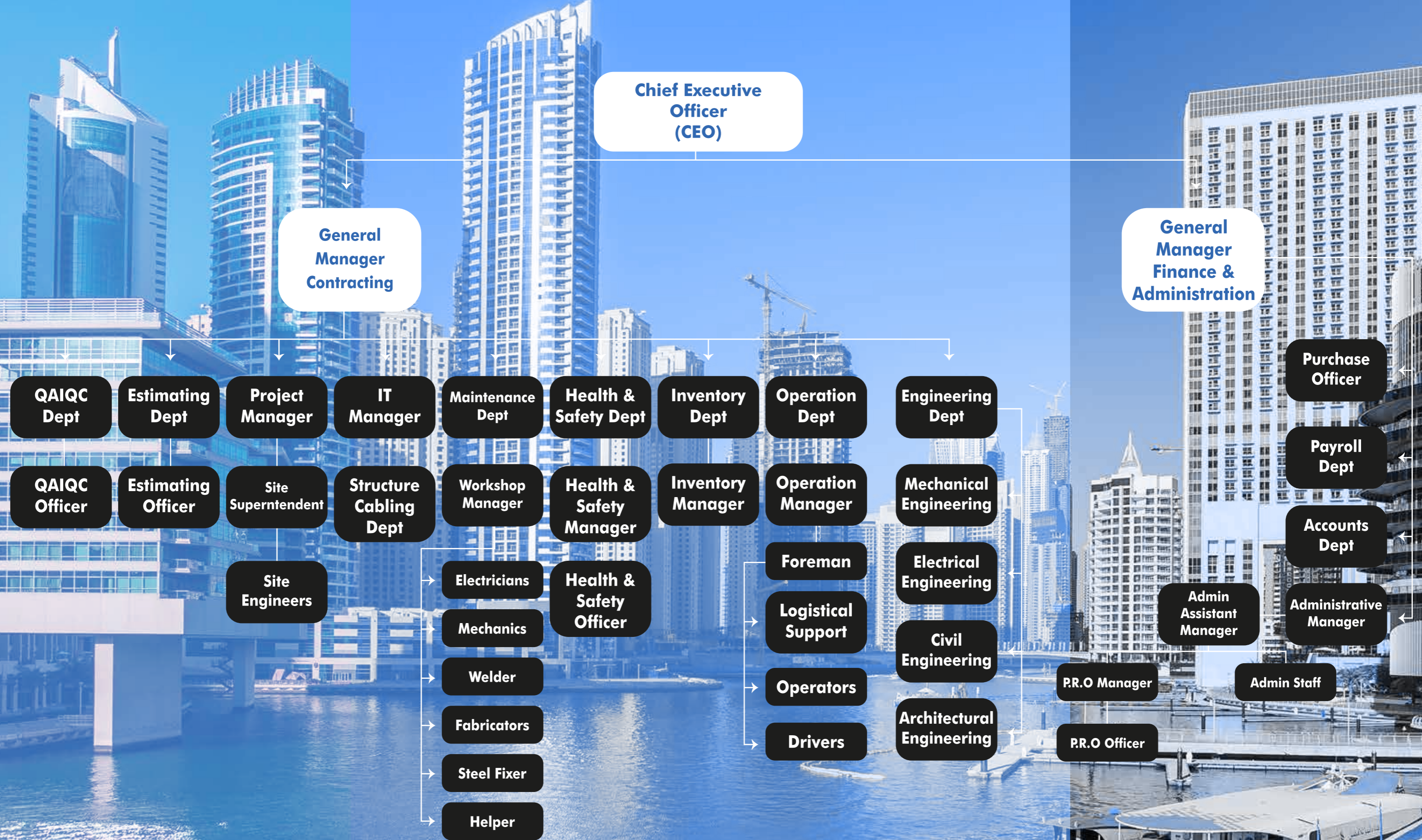
Prime Fleet doesn't segregate the employees on the basis of color, religion, nationality and culture. We respect everyone, make every effort to understand each other, take responsibilities and do our best to build mutual trust. We stimulate personal and professional growth, share the opportunities of development and maximize individual and team performance. Realizing consolidated power as a team.

## HEALTH AND SAFETY

Prime Fleet provides engineering and construction services for infrastructure and industrial projects. Prime Fleet is committed to enhance customer satisfaction through continual improvements, operational excellence and in time delivery quality products/service while remaining watchful over the quality and service, health, safety and environmental concerns of employees, contractors, and general public associated.

- Complying with all applicable Laws & regulation and other requirements related to QHSE.
- Developing framework for establishing and reviewing QHSE Objectives and targets.
- Maximize focus on employee health and continuously improving the work environment.
- Conduct our operation through efficient use of material and energy, with minimum waste and damage to the environment.
- Applying and supporting a hazards Identification, risk assessment and pollution prevention process which drives the implementation of controls to minimize the likelihood of injury or ill health and environmental damages.
- Providing sufficient information, advice, training and supervision to ensure that people under our control are fully aware of their responsibilities and are trained to undertake their activities and improve skills needed for our operation.
- Providing channels for the communication by our employees (or other potentially affected persons) to contribute to improvements in our quality.
- Measuring and reporting quality, health, safety and environmental performance on a regular, consistent and meaningful basis and comparing his performance against a known benchmark.
- Communication of our QHSE Policy to all interested parties (Management, employees and stakeholders) and also review this policy as and when required basis.
- Prime Fleet is committed to documenting, operating and maintaining quality management system.
- In operating to these standards, we will meet the quality requirements for customers and industry.

# ORGANIZATION CHART





# EQUIPMENT RESOURCE

## Tipper Trailers



- 45 cbm Aggregate Body
- 45 cbm Rock Body
- 40 cbm Scow End Rock Body

## On-Road Dump Trucks



- 20 cbm Sand Body
- 18 cbm Rock Body

## Wheel Loaders



- Caterpillar 966
- Caterpillar 980
- Caterpillar 988
- Komatsu WA 470
- Komatsu WA 500
- Komatsu WA 600
- Komatsu WA 700
- Volvo L220
- Volvo L350

## Excavators



- Caterpillar 345
- Caterpillar 365
- Caterpillar 385
- Caterpillar 385 CL
- Komatsu PC 400
- Komatsu PC 600
- Komatsu PC 800
- Komatsu PC 800 L
- Volvo EC 460
- Volvo EC 700

## Flat Bed Trailers



- 40 ft. Heavy Duty
- 45 ft. Heavy Duty

## Cement Bulkers



- 2 Axle 50 Ton
- 3 Axle 60 Ton

# EQUIPMENT RESOURCE

## Bulldozers



Caterpillar D8  
Caterpillar D9  
Komatsu DI55

## Graders



Caterpillar 14-M  
Komatsu GD705A  
Volvo G990

## Vibratory Roller Compactors



Domag BW 211D-40  
Domag BW 219D-40  
Caterpillar CS-563E  
Caterpillar CS-683E

## Septic Trailers



5.000 IG  
12.000 IG

## Off-Road Dump Trucks



Caterpillar 769  
Komatsu HD 325

## Articulated Dump Trucks



Caterpillar 740  
Volvo A35  
Volvo A40  
Komatsu HM400

## Water Tankers Sweet/Salt Water



5.000 IG  
12.000 IG

## Fuel Trucks



1.000 IG  
2.000 IG  
5.000 IG  
12.000 IG



### Generators

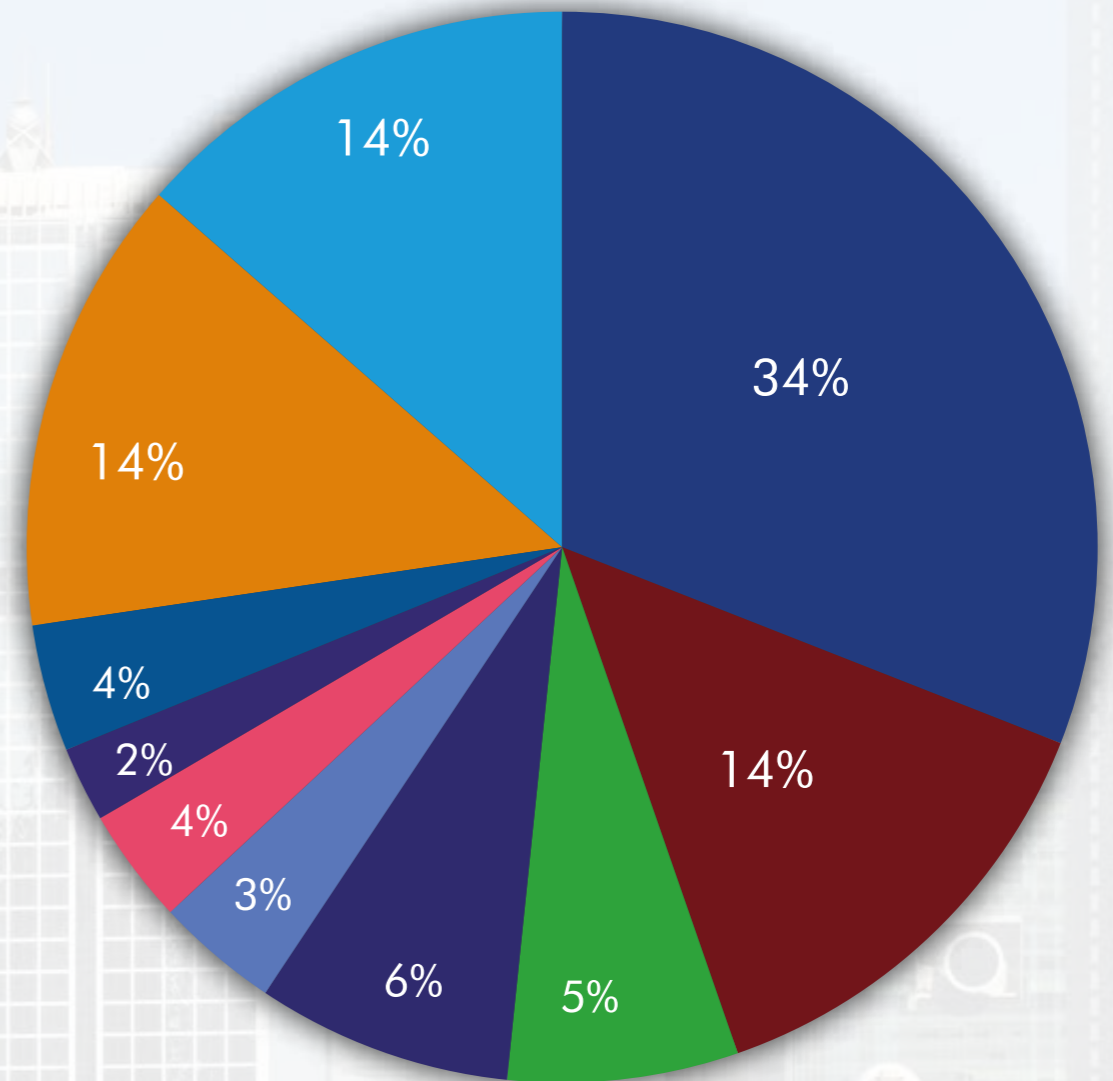
- 60 kVa
- 80 kVa
- 120 kVa
- 140 kVa
- 160 kVa
- 250 kVa/G



### Light Towers

- Ingersoll Rand
- 4 x 1000w
- Mobile Light Towers
- Terex Amida
- 4 x 1000W
- Mobile Light Towers

# Man Power



- |                  |   |                  |   |
|------------------|---|------------------|---|
| Steel Fixer - 5  | ■ | Drivers - 75     | ■ |
| Electricians - 8 | ■ | Operators - 30   | ■ |
| Helpers - 30     | ■ | Technicians - 12 | ■ |
| Managements - 30 | ■ | Mechanics - 14   | ■ |
| Welders - 8      | ■ | Fabricators -    | ■ |

# PROJECT PROFILE

## RUWAIS PROJECT

**Name :** RUWAIS PROJECT.

**Owner :** ETIHAD RAILS.

**Contractor :** SK Engineering  
& Construction.

**Scope of Work :** Logistic Support to  
Trans Middle East General Contracting.

**Project Duration :**

**Peak Manpower :**



## AL MANDOUS PROJECT

**Name :** AL MANDOUS PROJECT.

**Owner :** ADNOC.

**Contractor :** SK Engineering & Construction.

**Scope of Work :** Logistic Support to Trans  
Middle East General Contracting.

**Project Duration :**

**Peak Manpower :**

